

PUGSLEY PARK / MONUMENT PARK PUBLIC WORKSHOP

Downtown Revitalization Initiative

City of Peekskill

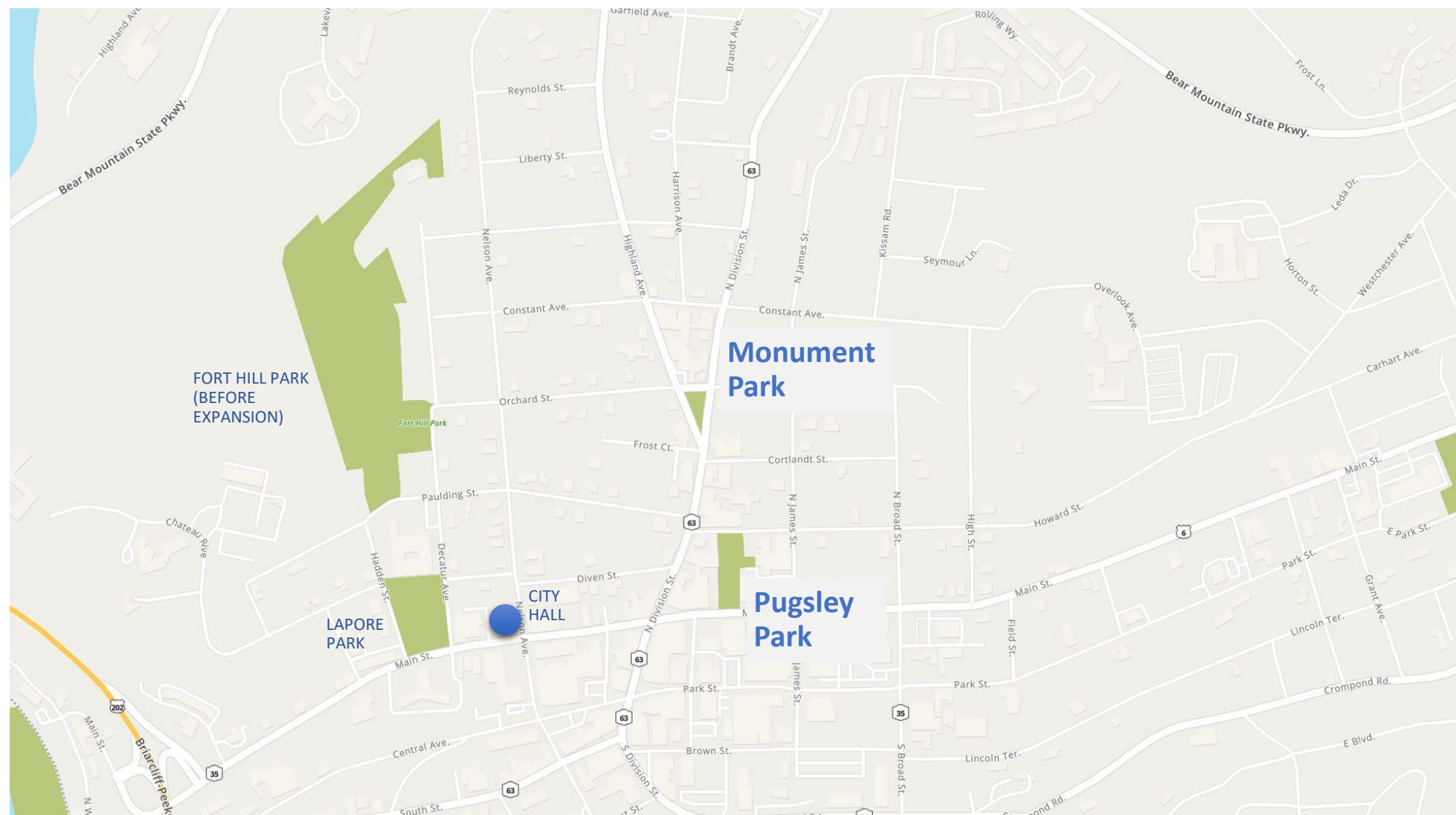
November 15, 2022



PEEKSKILL
NEW YORK

Aspect 120 Landscape Architecture P.C.
Brook Farm Group

Green Space



Downtown Revitalization Strategy

Pugsley Park

Located in Downtown Peekskill providing escape from urban setting and shortcut connecting Howard Street to Main Street. Lacks sufficient seating, shade, and efficient lighting. Goal is to activate space and attract residents to enjoy, rest, and walk-through park.

- New plazas and seating areas to support downtown events and passive enjoyment;
- Additional pedestrian-scaled lighting;
- Small-scale play equipment to attract children;
- Additional trash cans;
- Bike parking infrastructure;
- Planting of trees, shrubs, flowers;
- Infrastructure for power hook-ups and watering

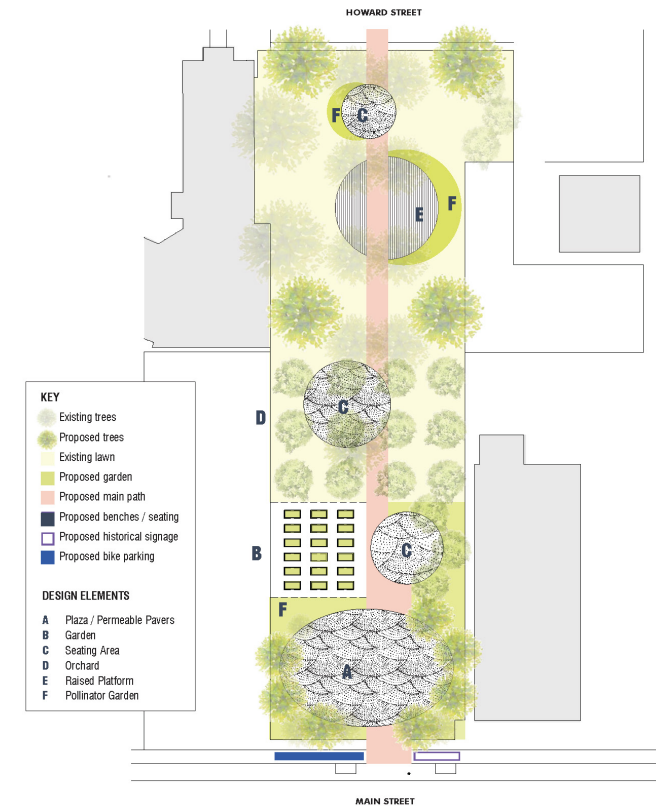
Improvements will coordinate with planned public art installations and will comply with deed restriction not allowing organized sports.



Example of Climbable Sculpture



Example of Climbable Sculpture



Proposed Site Plan

Peekskill Downtown Revitalization Initiative V-75

Downtown Revitalization Strategy

Monument Park

Serving nearby residents north of downtown with benches and small lawn. Located at downtown gateway. Residents have used lawn for sports like soccer, but now prohibited. Poorly lit so not visible at night; Civil War monument especially. Lawn under-used and could be enhanced with improved planting and benches. Bus stop on east side highly used. Westchester Bee-Line explored bus shelter, however not included in plans. Maintenance improvements will also improve quality.

- Lighting – uplights for Civil War memorial statue;
- Decorative, pedestrian-scaled lighting throughout park;
- Lights on top of existing stone pillars
- Additional plantings; relocation of existing benches; and installation of new custom benches
- LED informational sign at existing bus stop



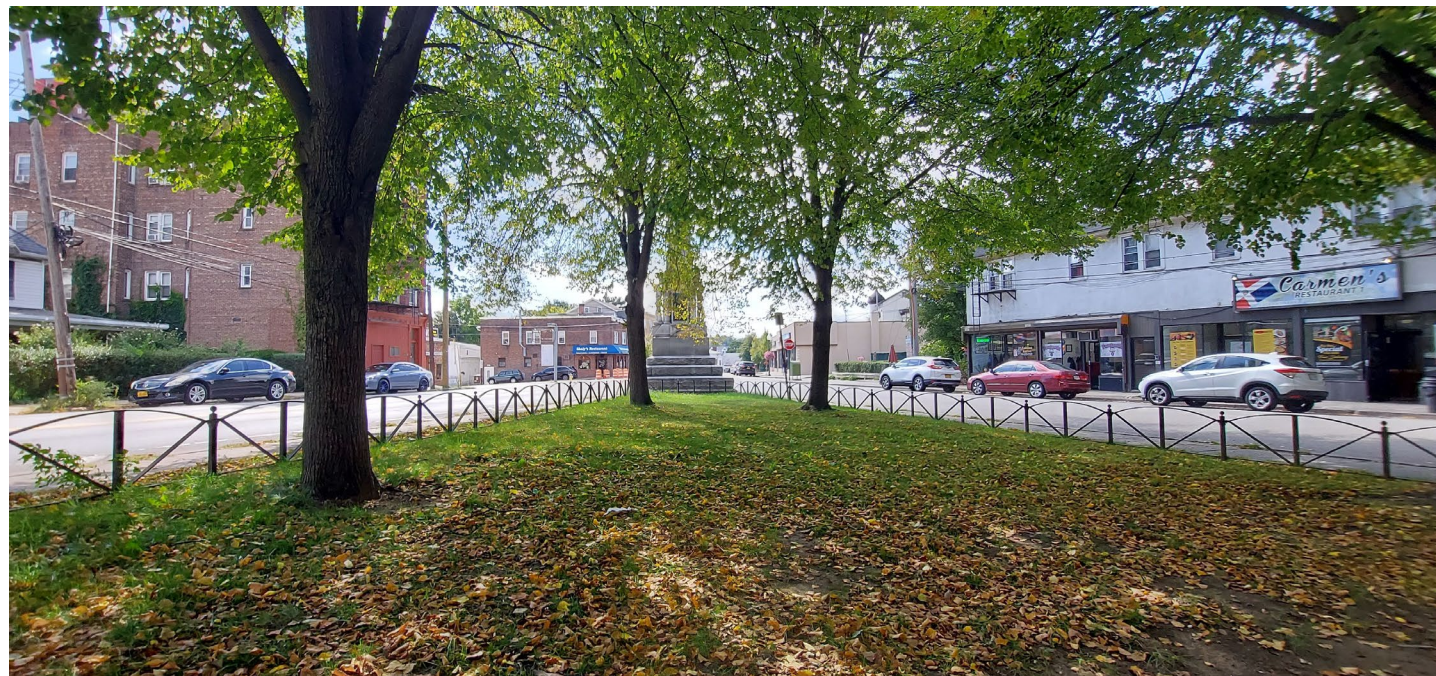
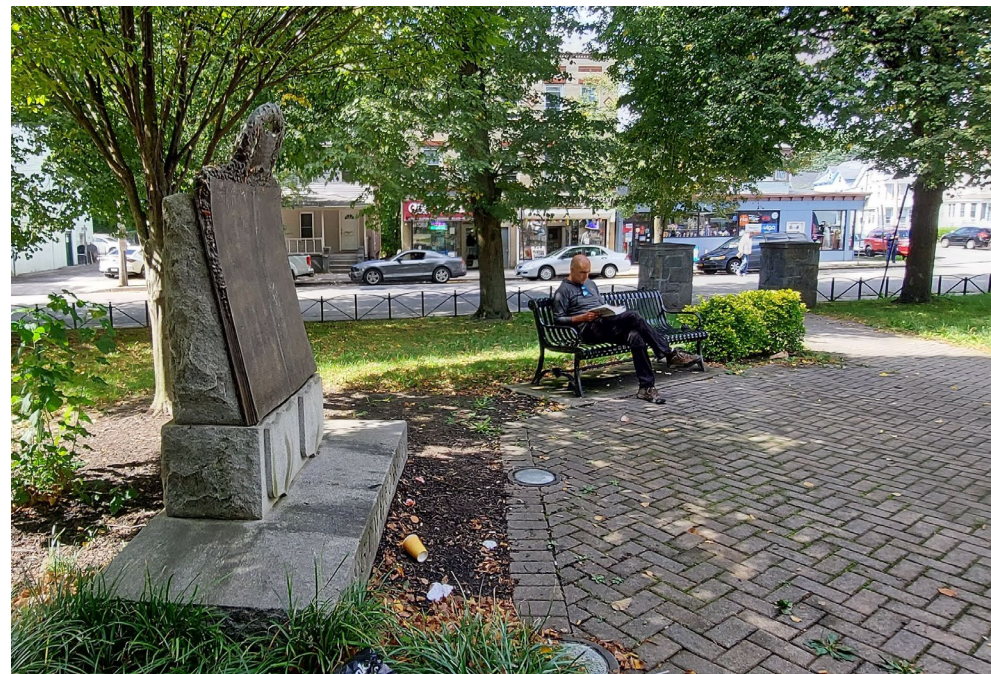
5 Projects Recommended for DRI Funding



Proposed Site Plan

Peekskill Downtown Revitalization Initiative V-85

Monument Park

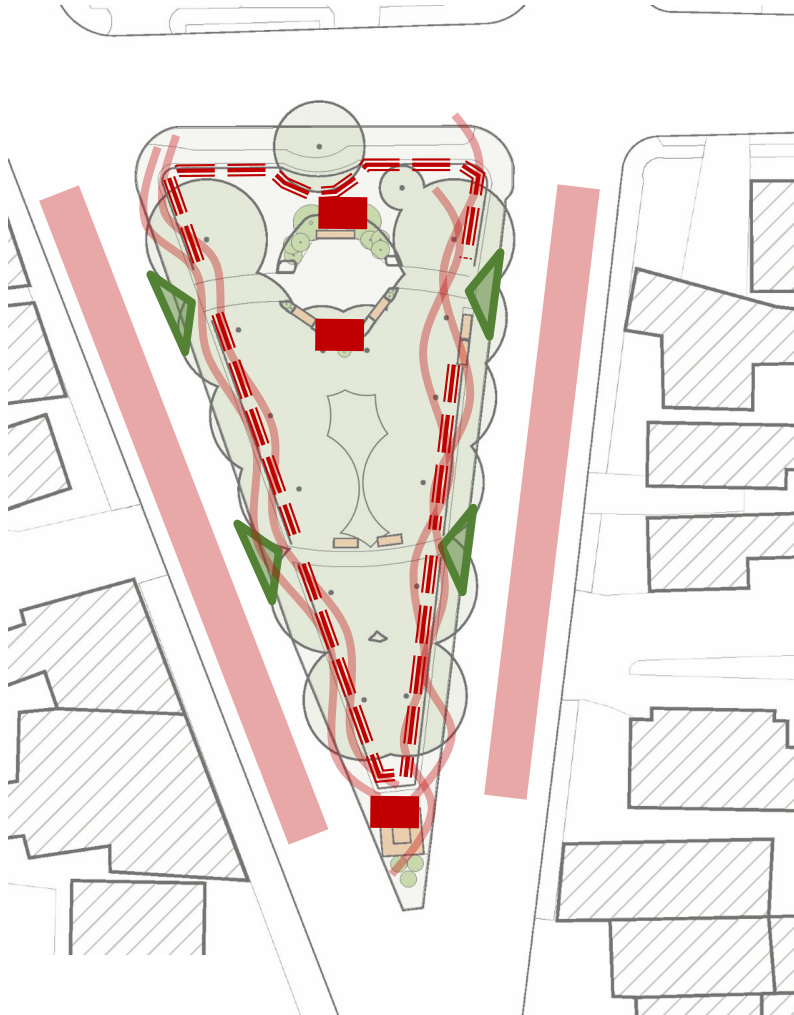


Pugsley Park



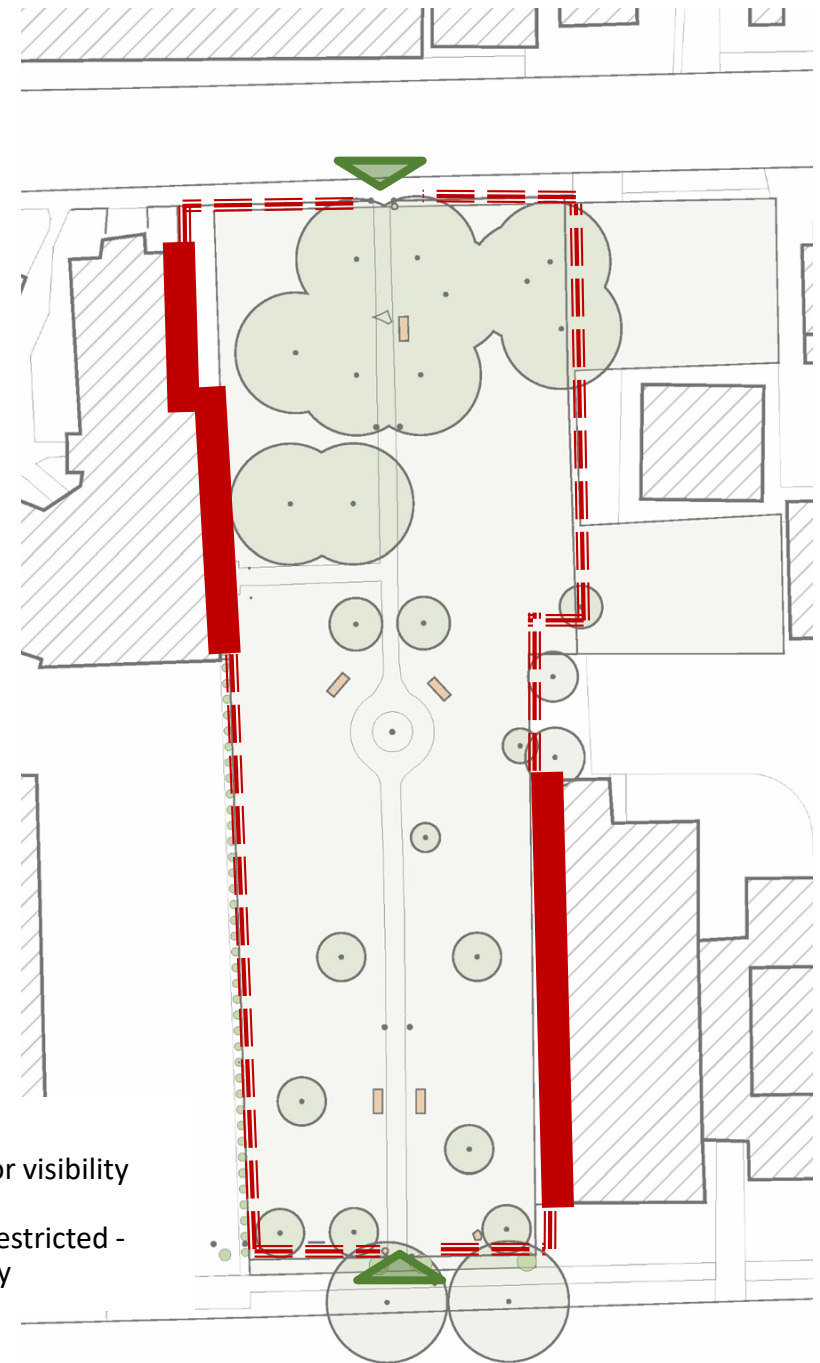
Site Analysis

EDGES (physical barriers, visual barriers)



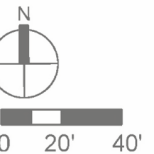
Monument

- Low fencing deters access
- Wide, fast moving vehicular lanes discourages entry
- Deep shade reduces views of and attraction to interior



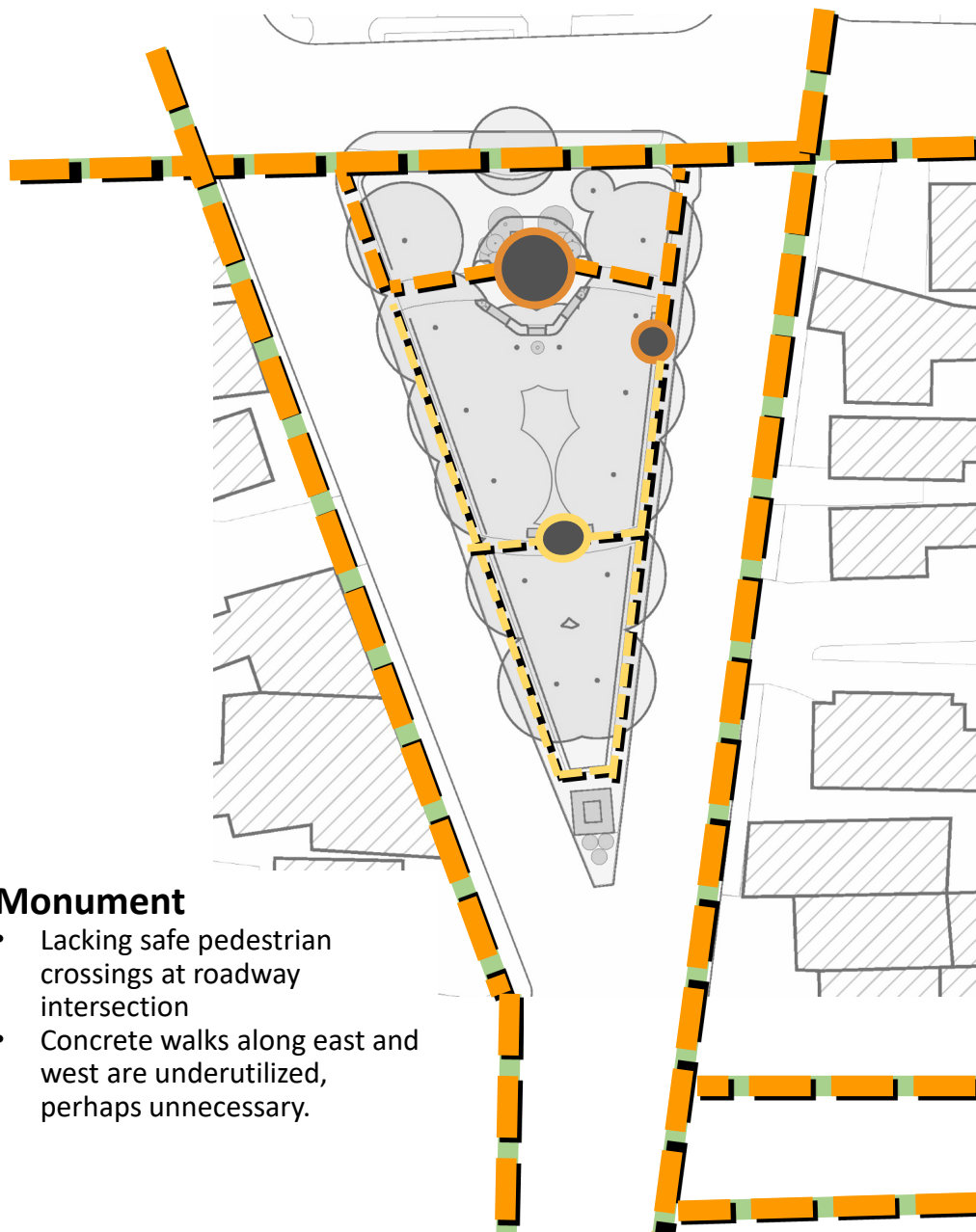
Pugsley

- Fencing allows for visibility from sidewalk
- Physical access restricted - discourages entry



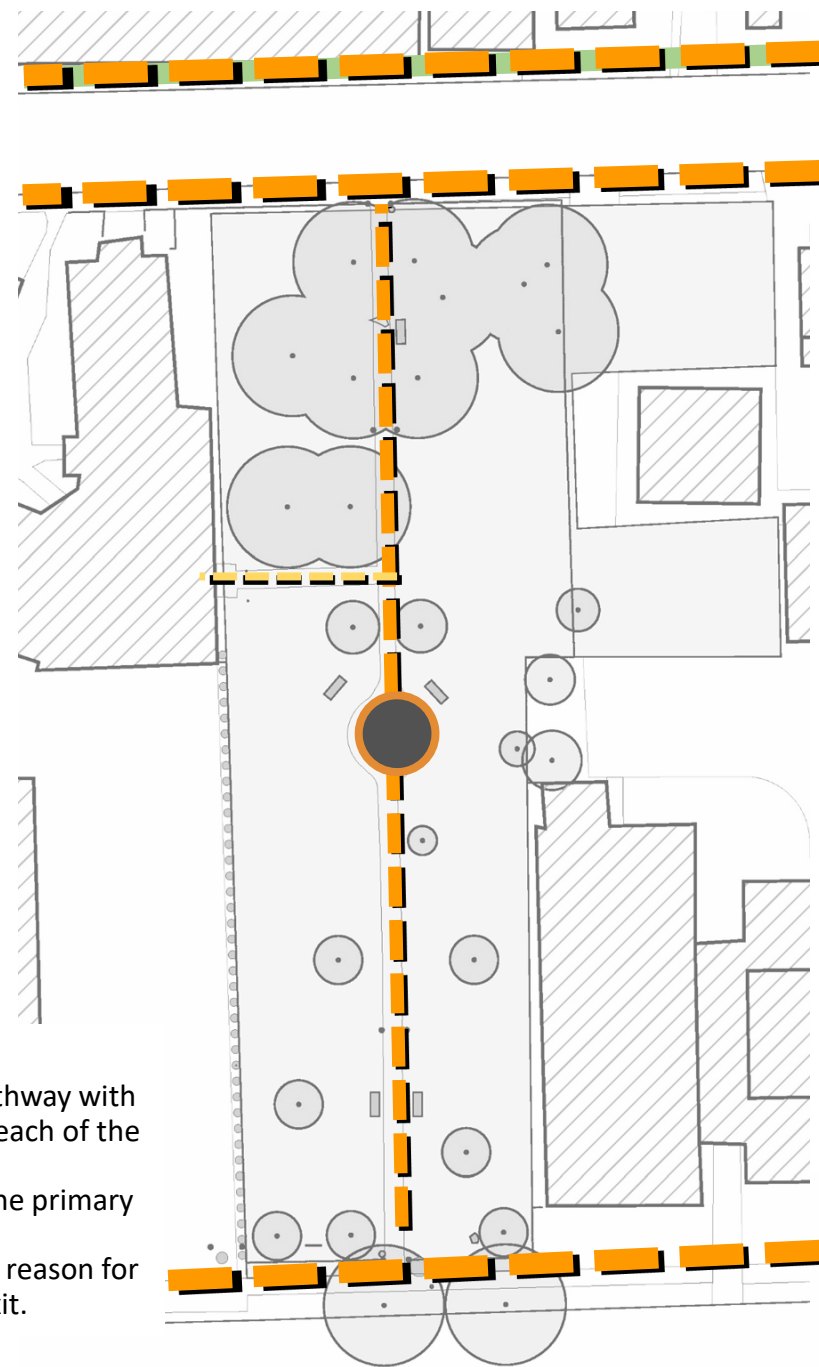
Site Analysis

Circulation/ Connectivity



Monument

- Lacking safe pedestrian crossings at roadway intersection
- Concrete walks along east and west are underutilized, perhaps unnecessary.

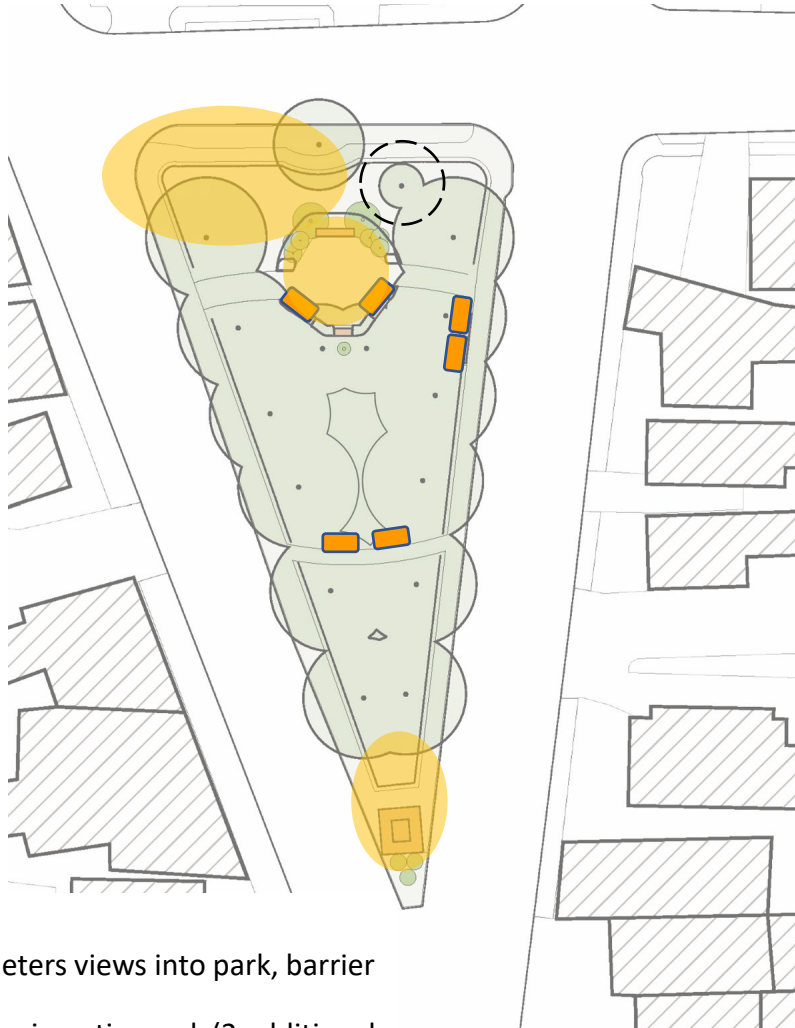


Pugsley

- Singular central pathway with one entry point at each of the sidewalks
- Through-traffic is the primary park function.
- No opportunity, no reason for casual entry and exit.

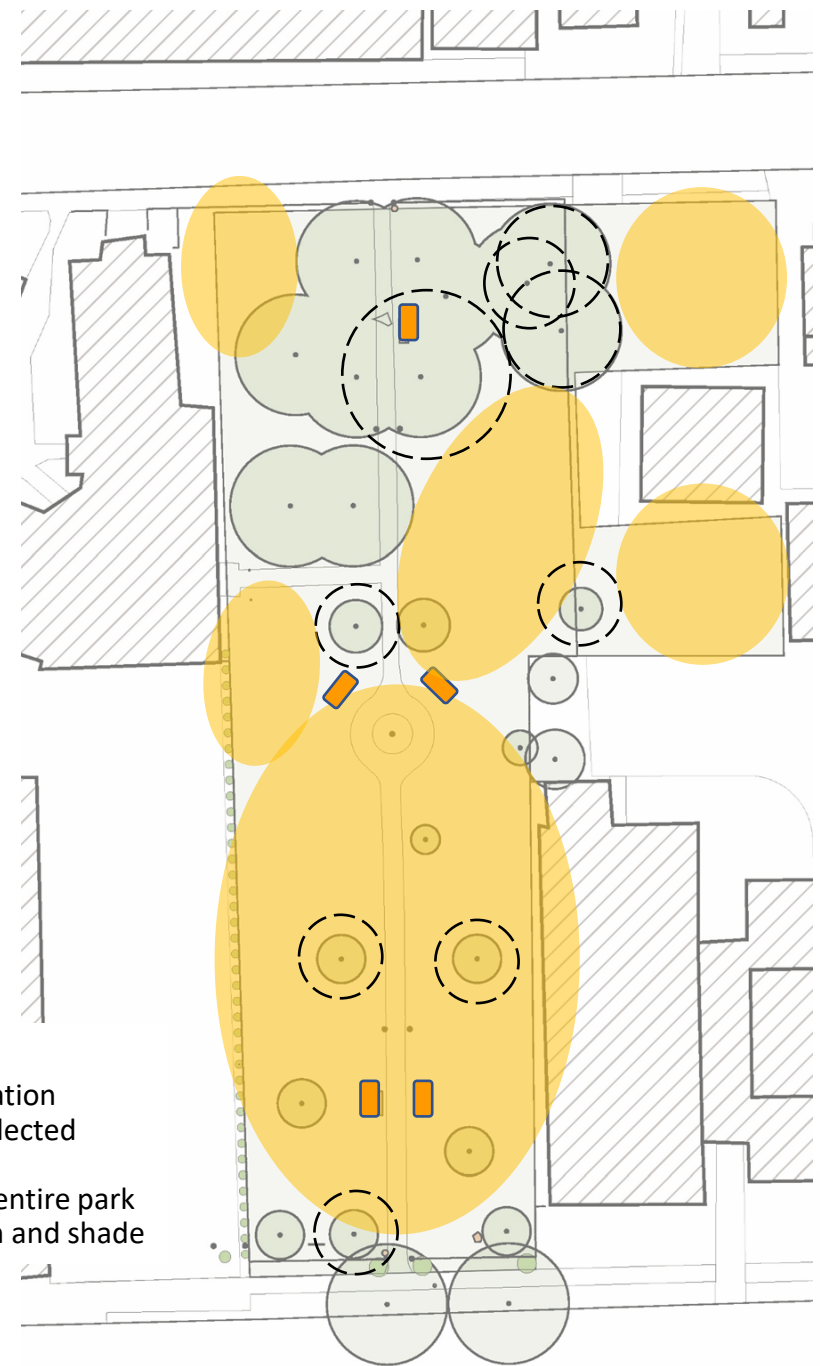
Site Analysis

Natural Features/ Site Furnishing



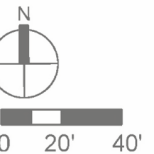
Monument

- Deep shade deters views into park, barrier to entry
- Only 4 benches in entire park (2 additional benches at bus stop), placement of benches not conducive to conversations or casual interactions among strangers.



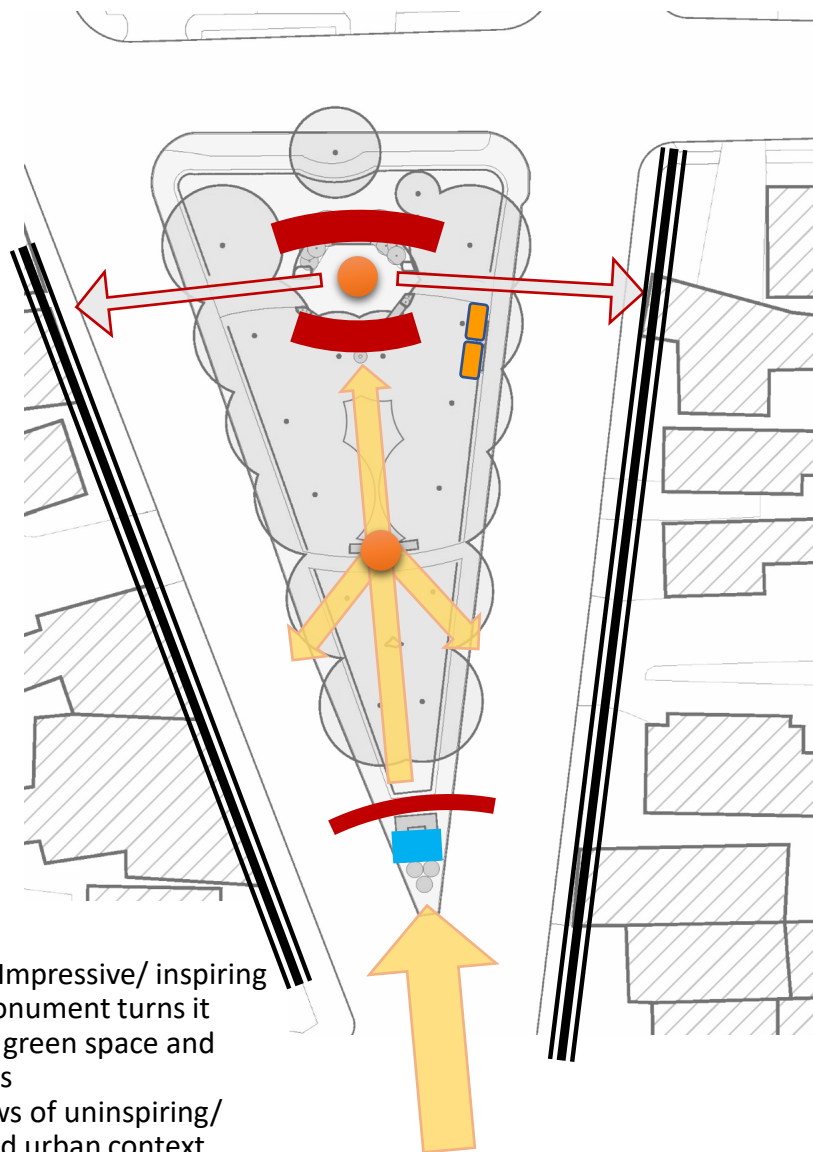
Pugsley

- Edit existing vegetation (remove/ prune selected trees and shrubs)
- Only 5 benches in entire park
- Ample areas of sun and shade



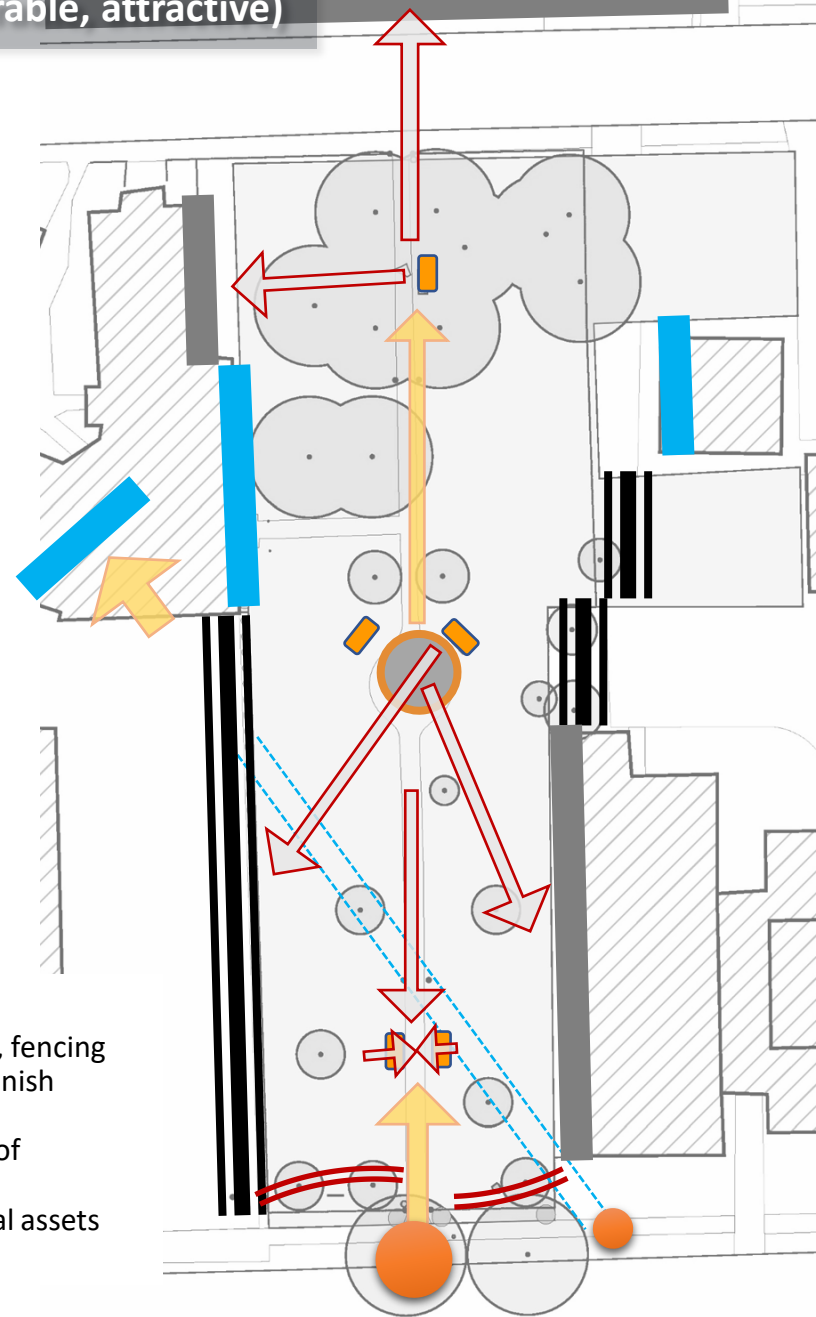
Site Analysis

Views/Visibility (opportunities, focal points, undesirable, attractive)



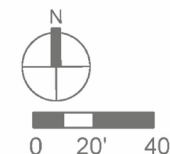
Monument

- Focal point- Impressive/ inspiring Civil War monument turns it back on the green space and blocks views
- Framed views of uninspiring/ disconnected urban context



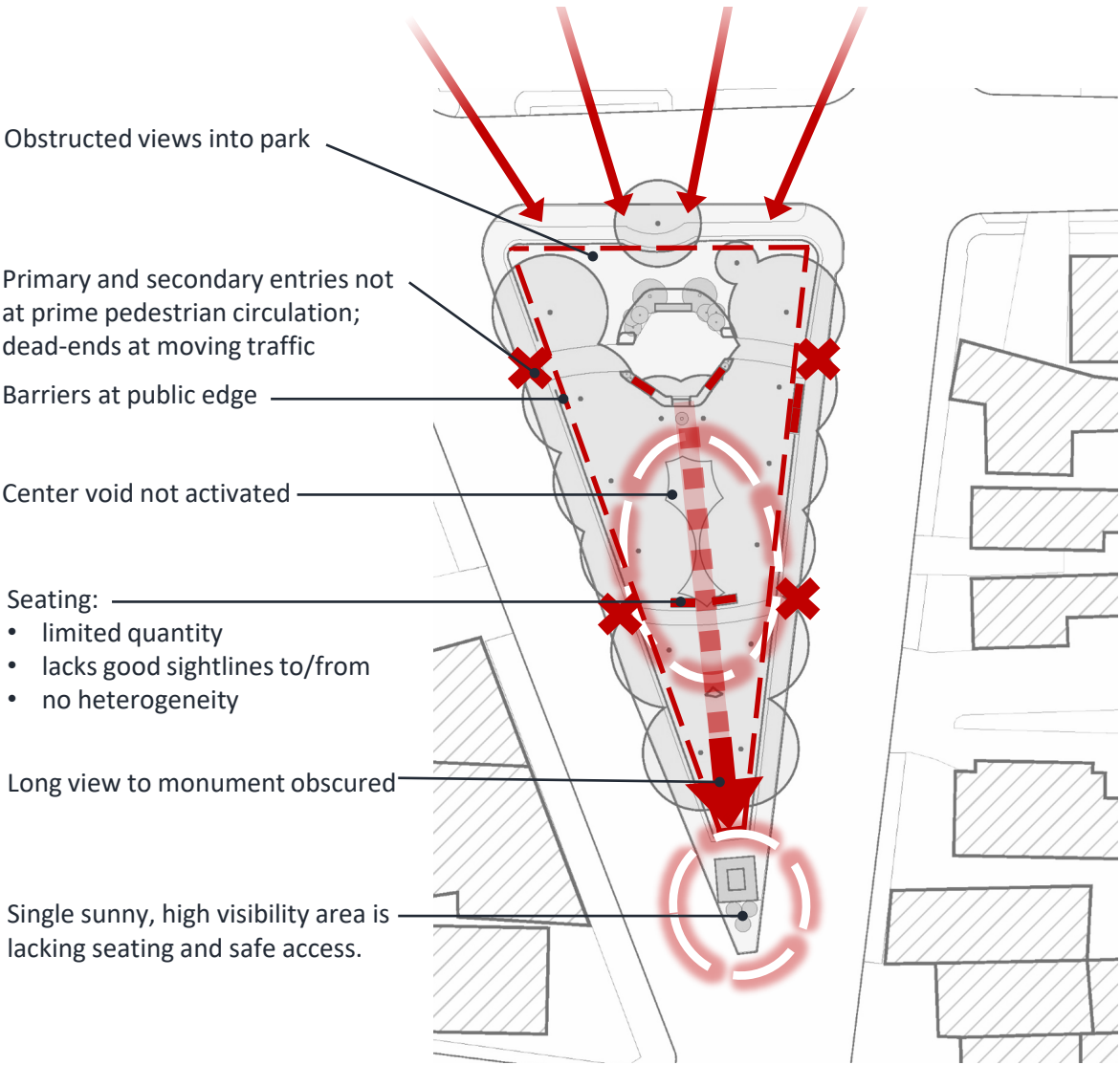
Pugsley

- Small trees, shrubs, fencing along Main St. diminish visibility of interior
- Undesirable views of adjacencies
- Unrealized potential assets hidden/diminished

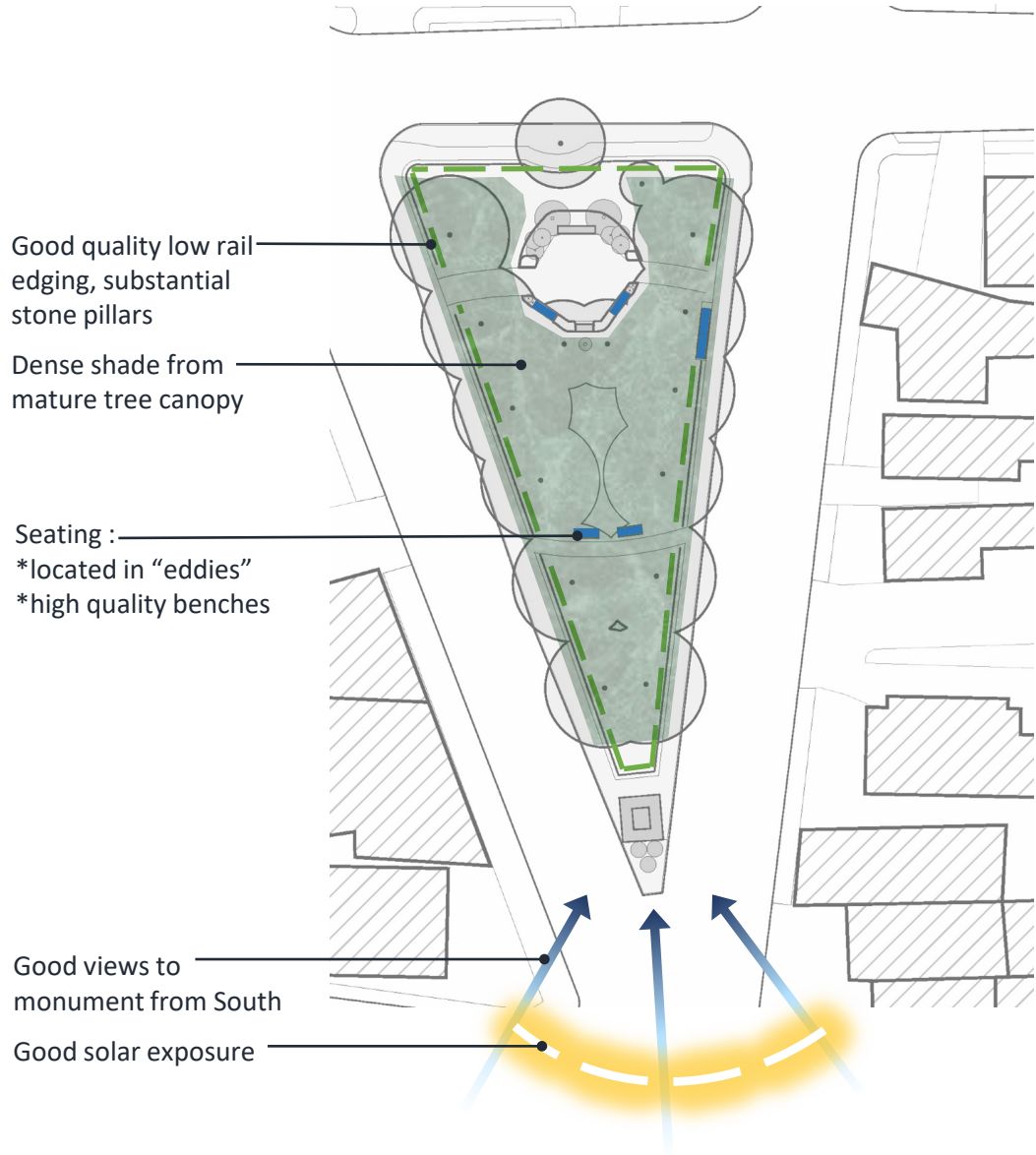


Summary of Site Analysis: Monument Park

Needs Analysis - recognize **existing shortcomings** and opportunities for improvement

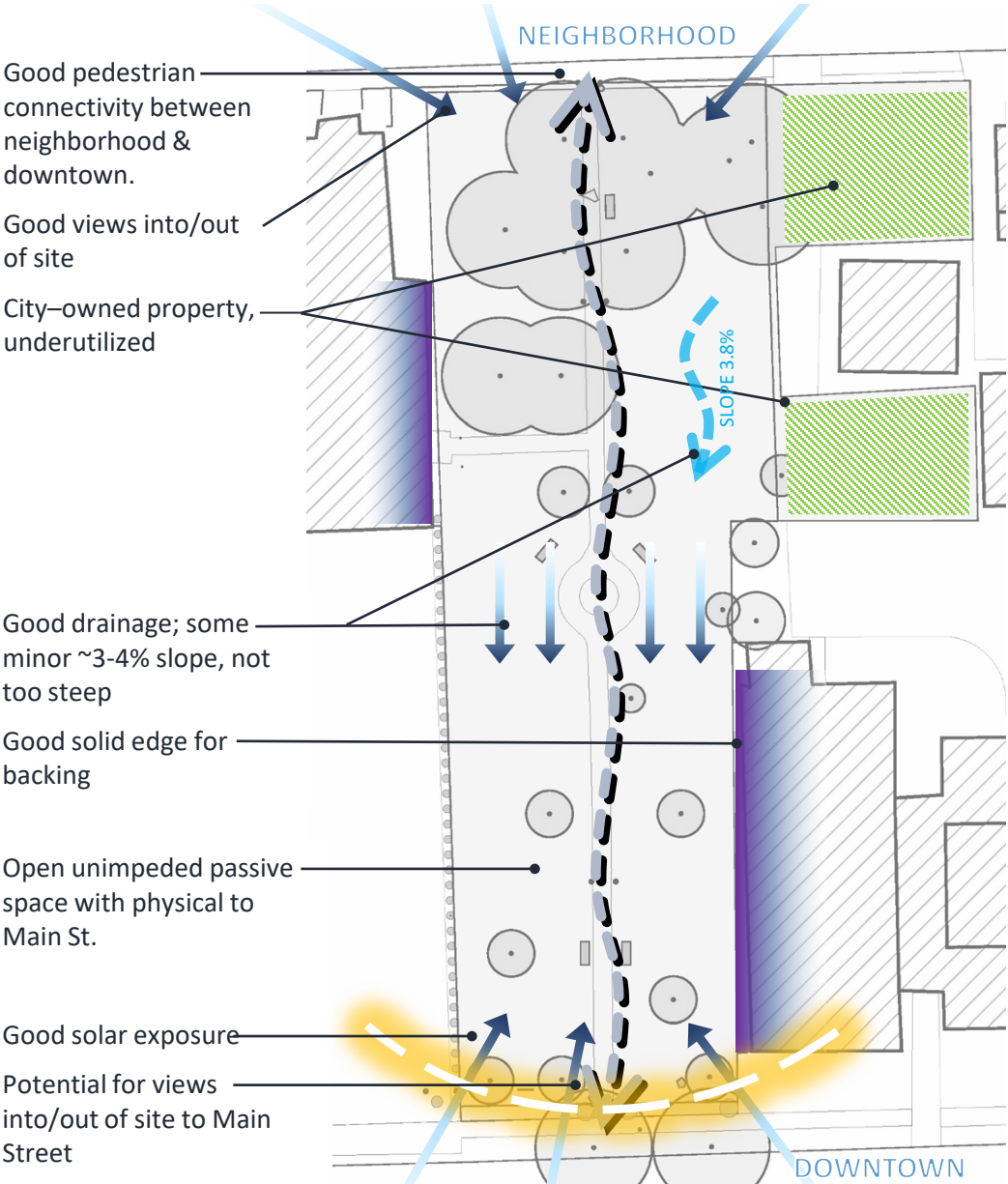


Needs Analysis – identify **existing assets** and opportunities for to capitalize upon them

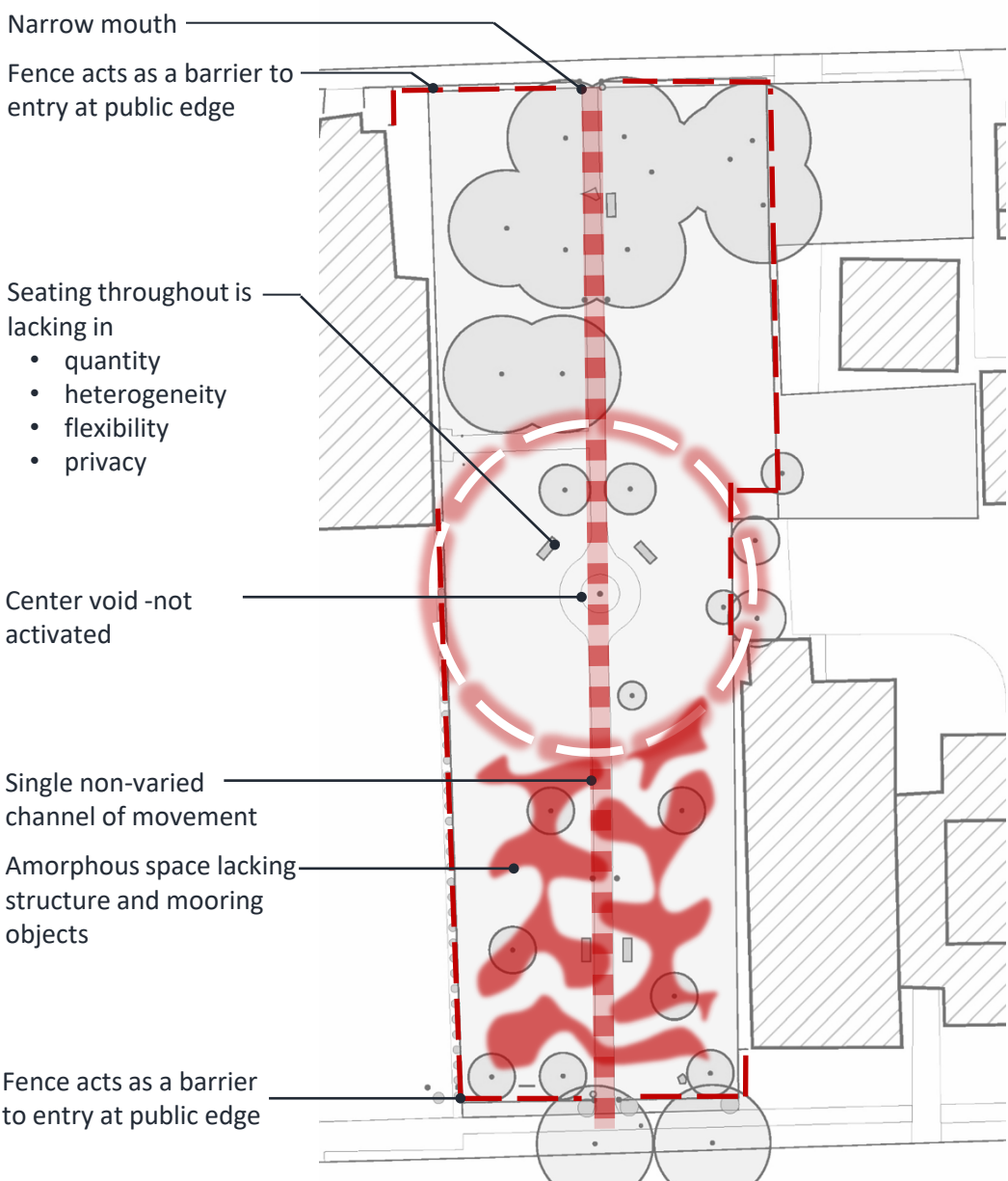


Summary of Site Analysis: Pugsley Park

Needs Analysis - recognize **existing shortcomings** and opportunities for improvement



Needs Analysis – identify **existing assets** and opportunities for to capitalize upon them

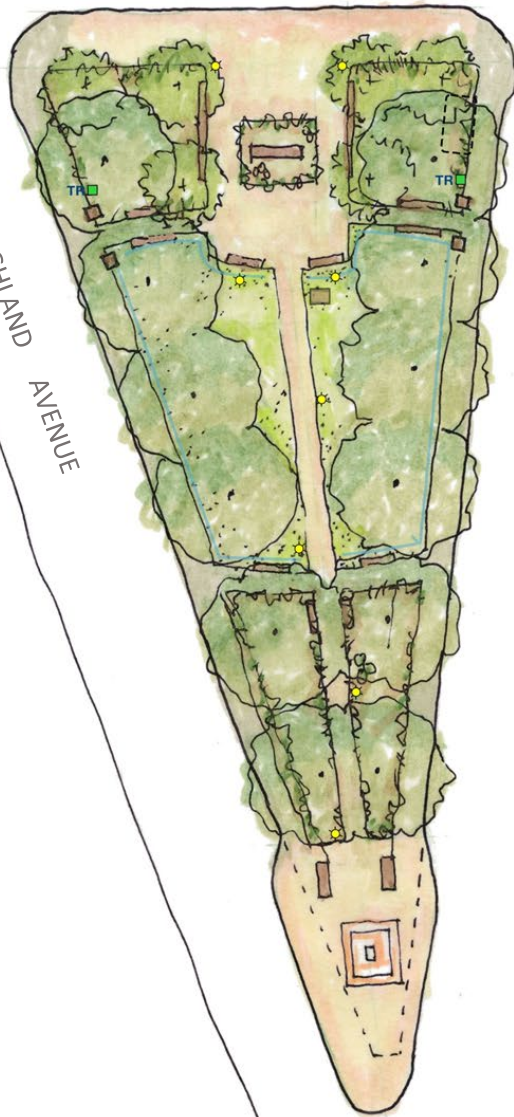


Design Alternatives: Monument Park

ORCHARD STREET

HIGHLAND AVENUE

NORTH DIVISION STREET

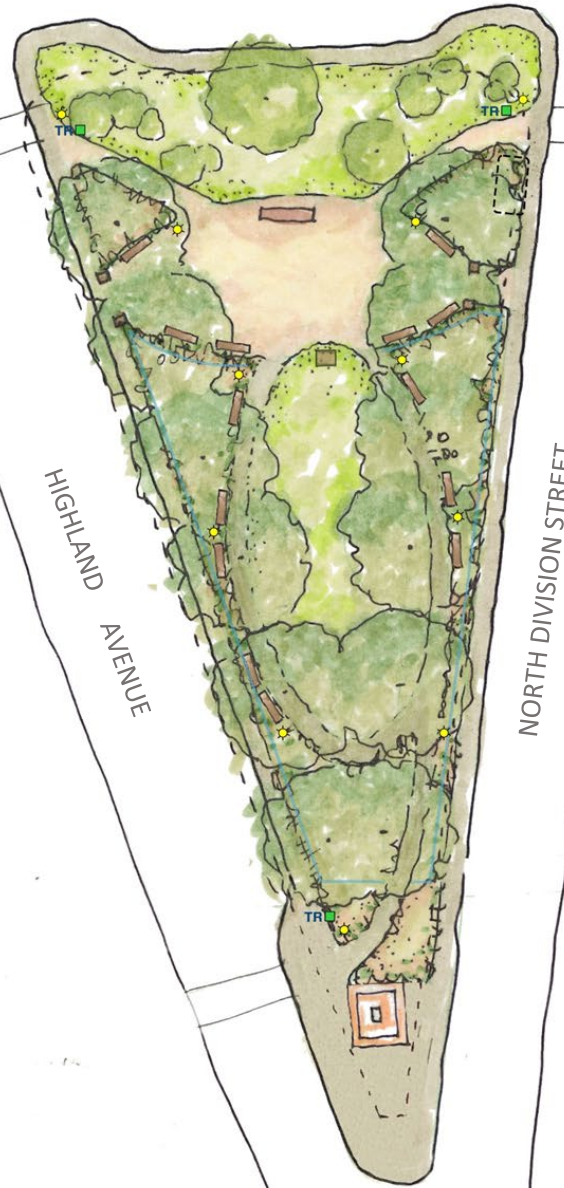


A

ORCHARD STREET

HIGHLAND AVENUE

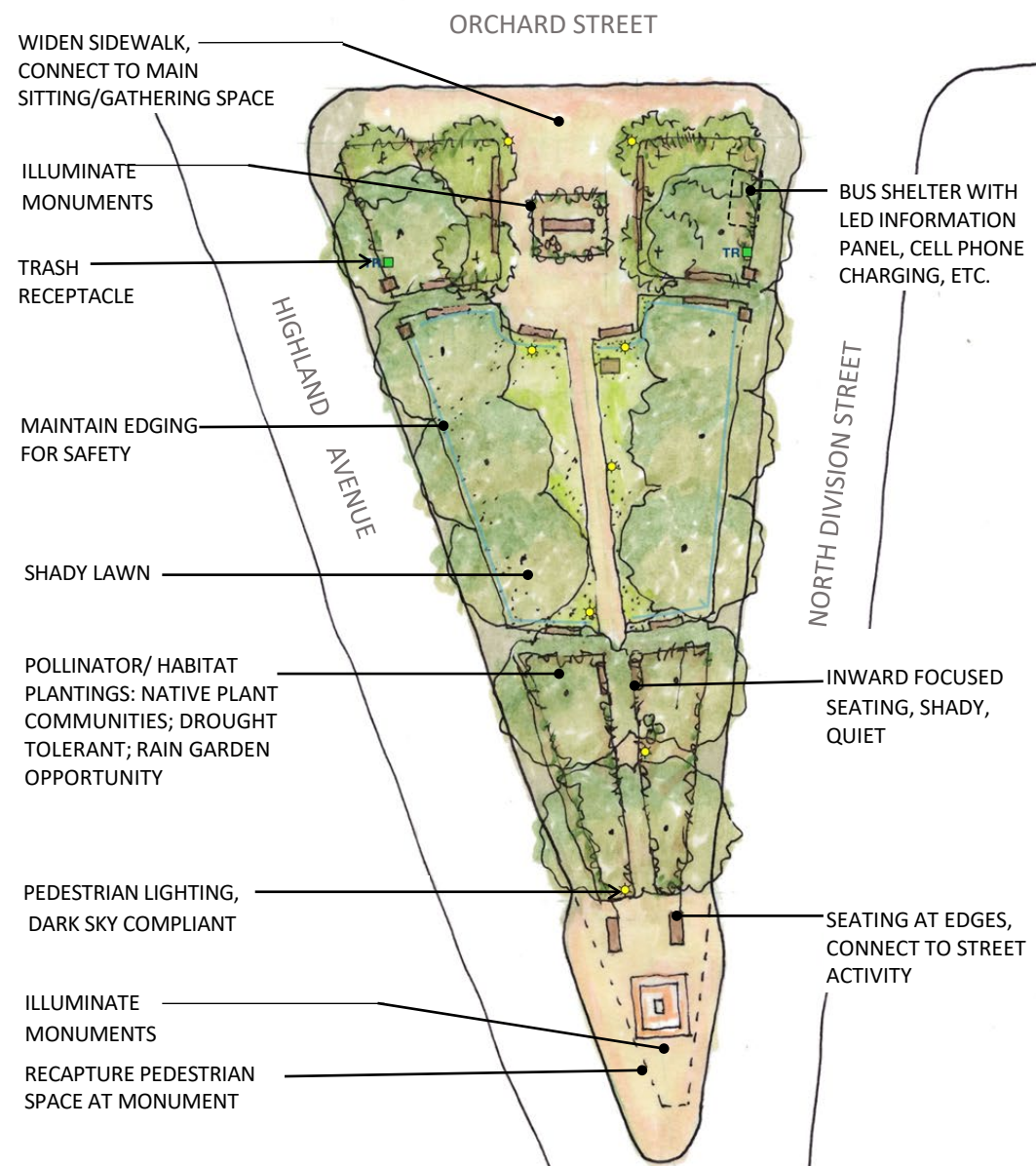
NORTH DIVISION STREET



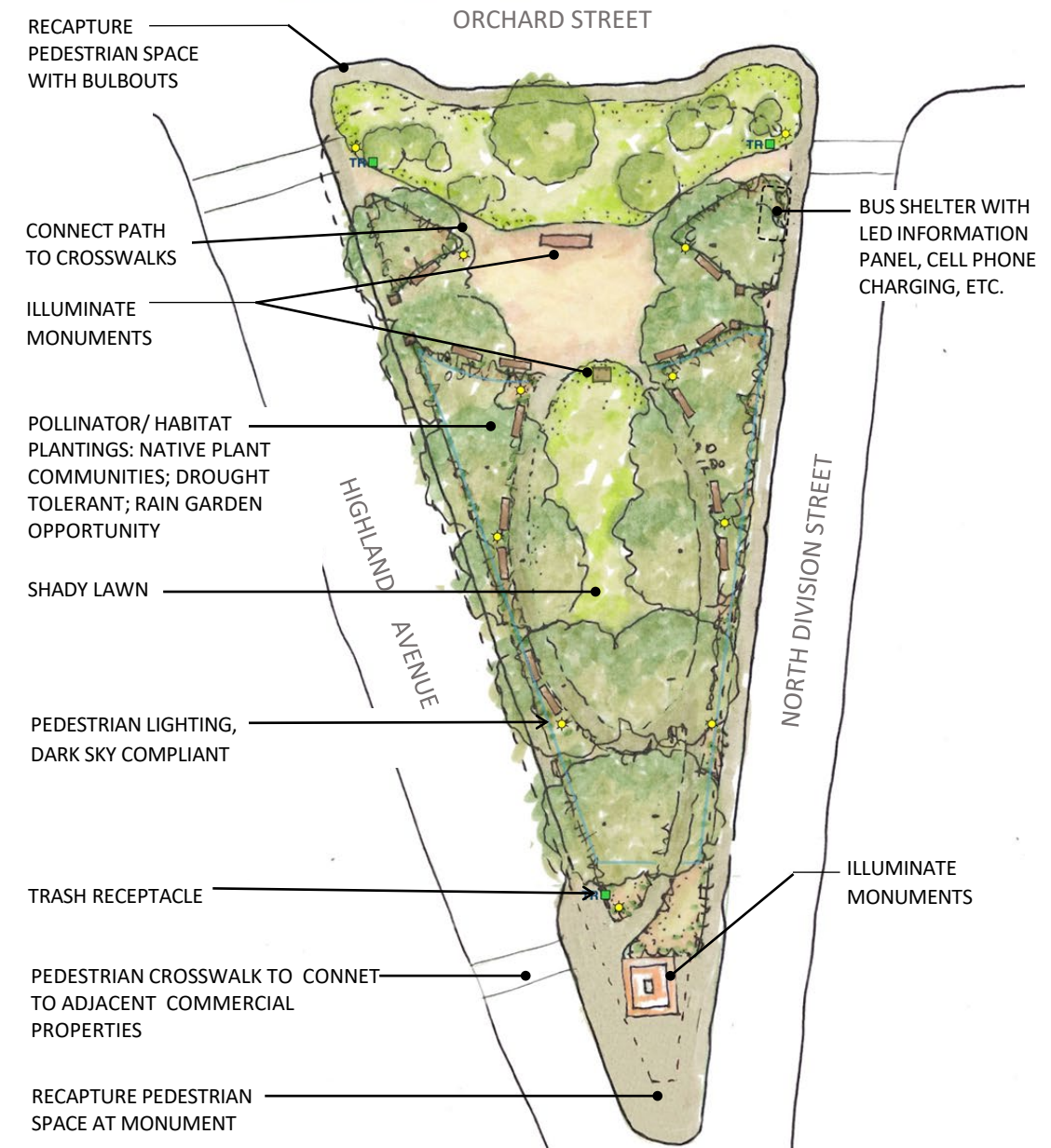
B



Design Alternatives: Monument Park

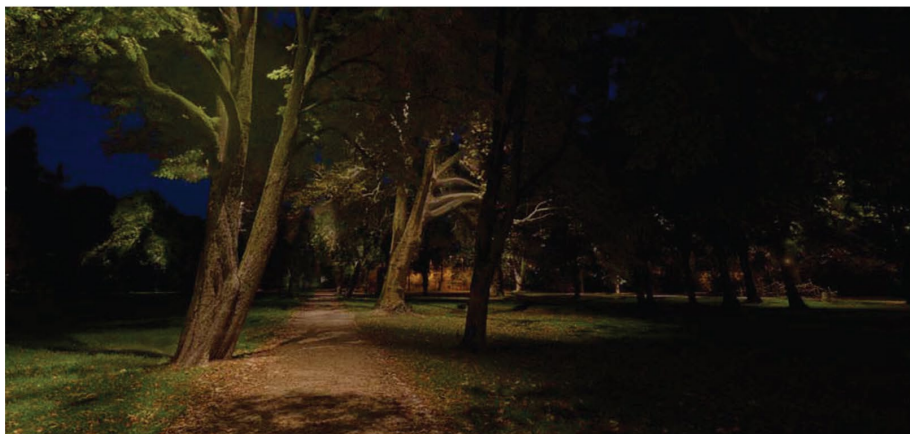
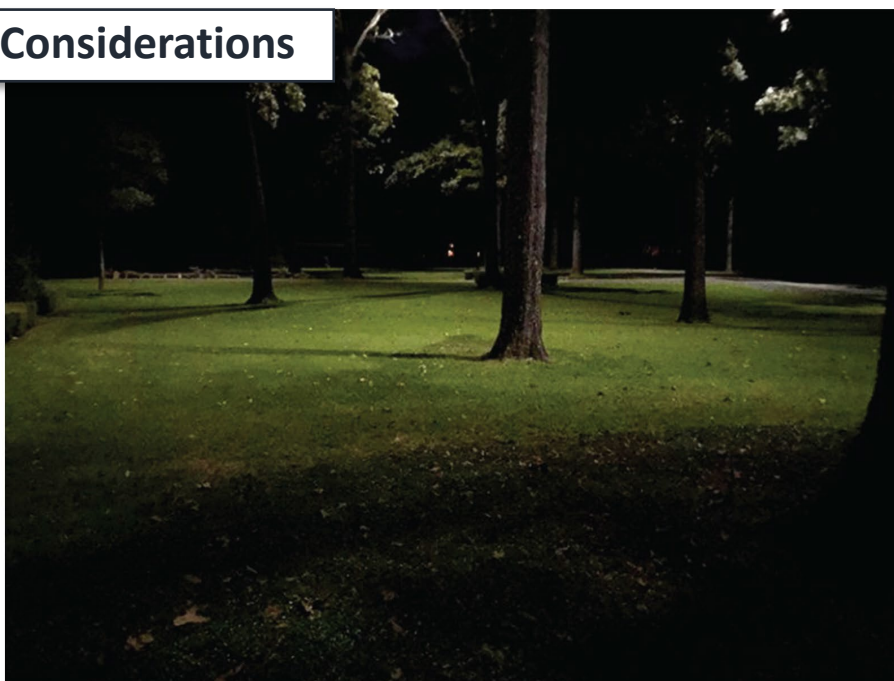


A



B

Lighting Ideas & Considerations

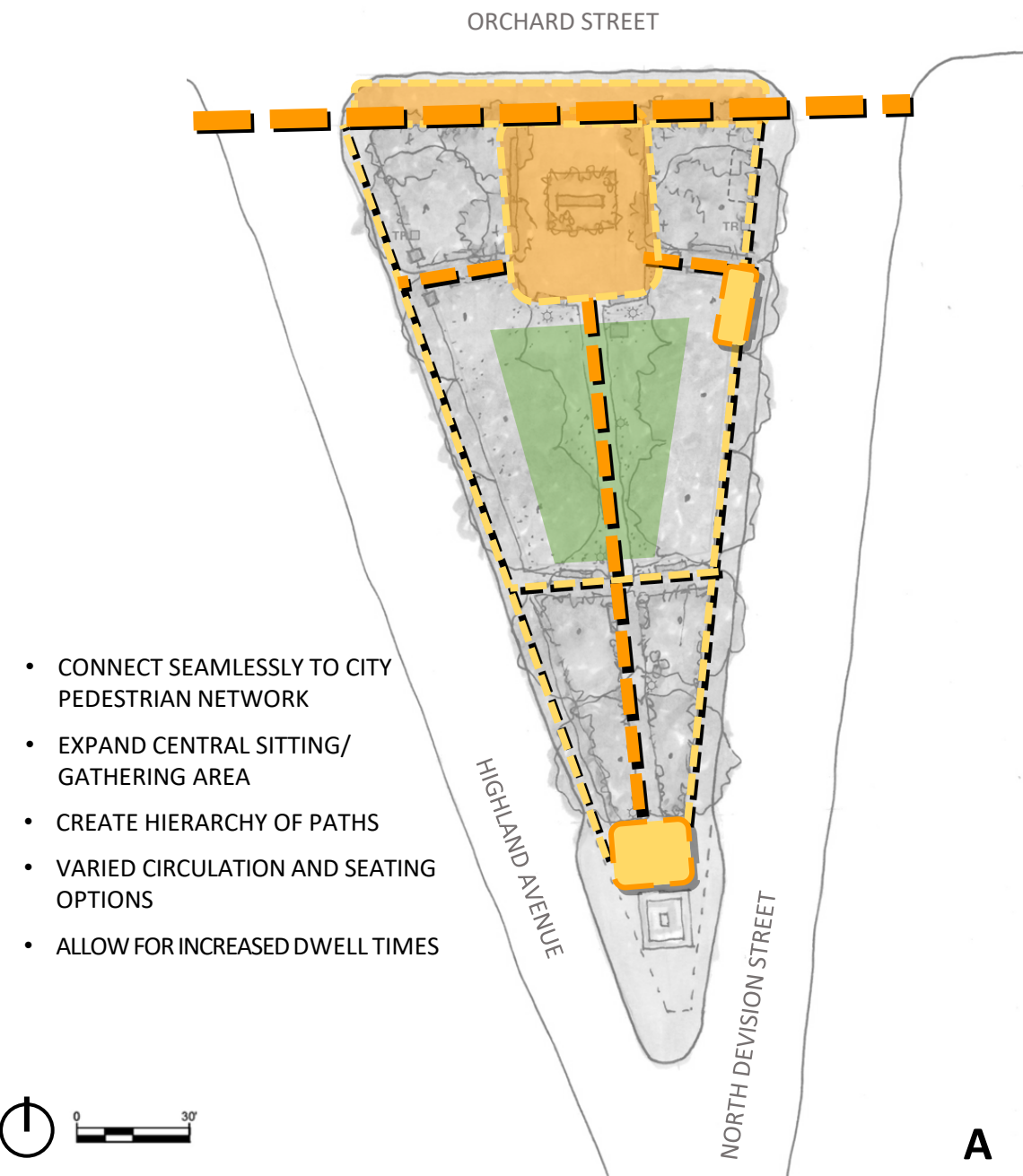


Large expanses of lawn should not be flooded with light.

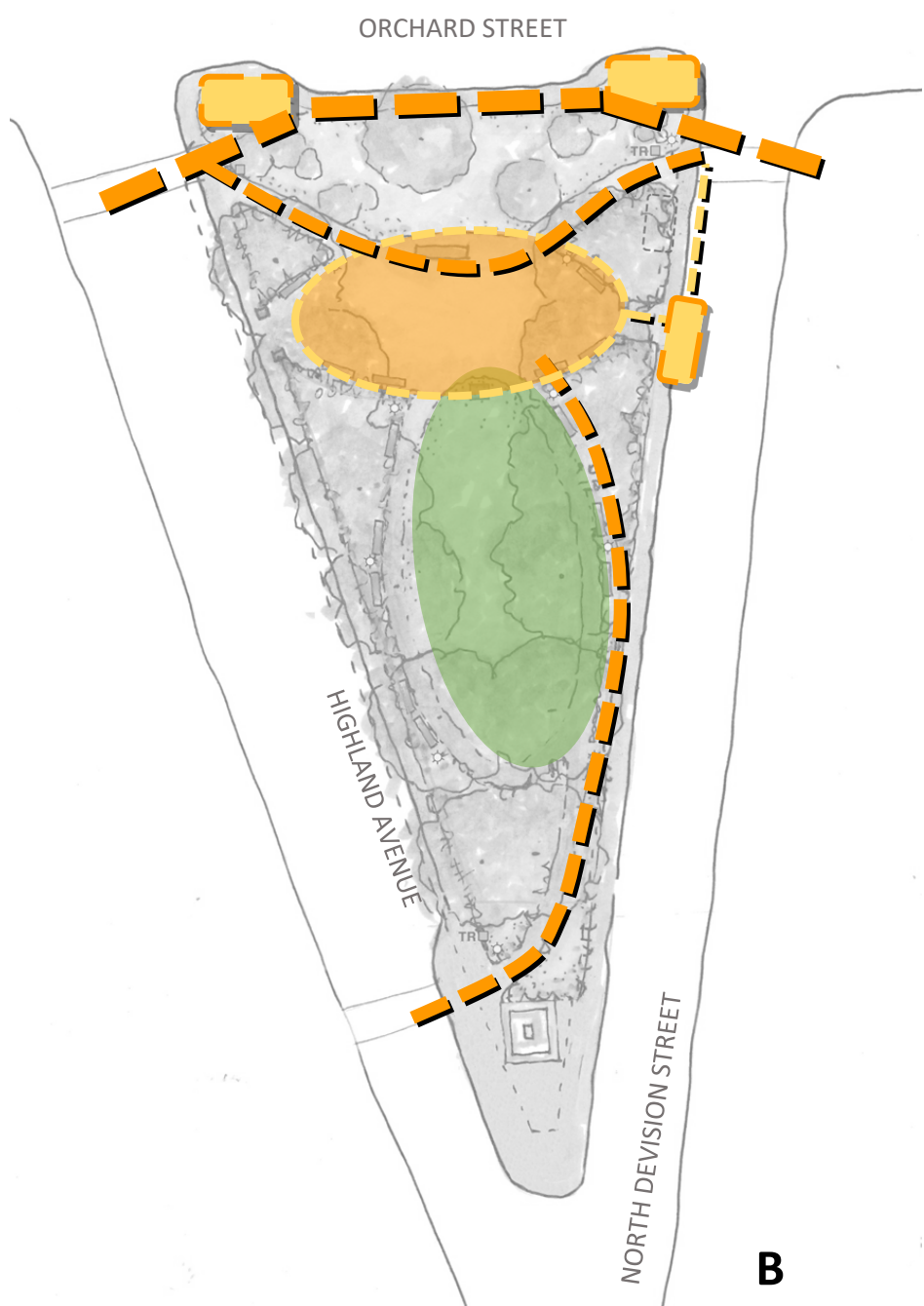
Light prioritizes primary pathways and key intersections and destinations.

Pedestrian-oriented lighting strategies including appropriate mounting height and warmer color temperatures.

Design Alternatives: Monument Park

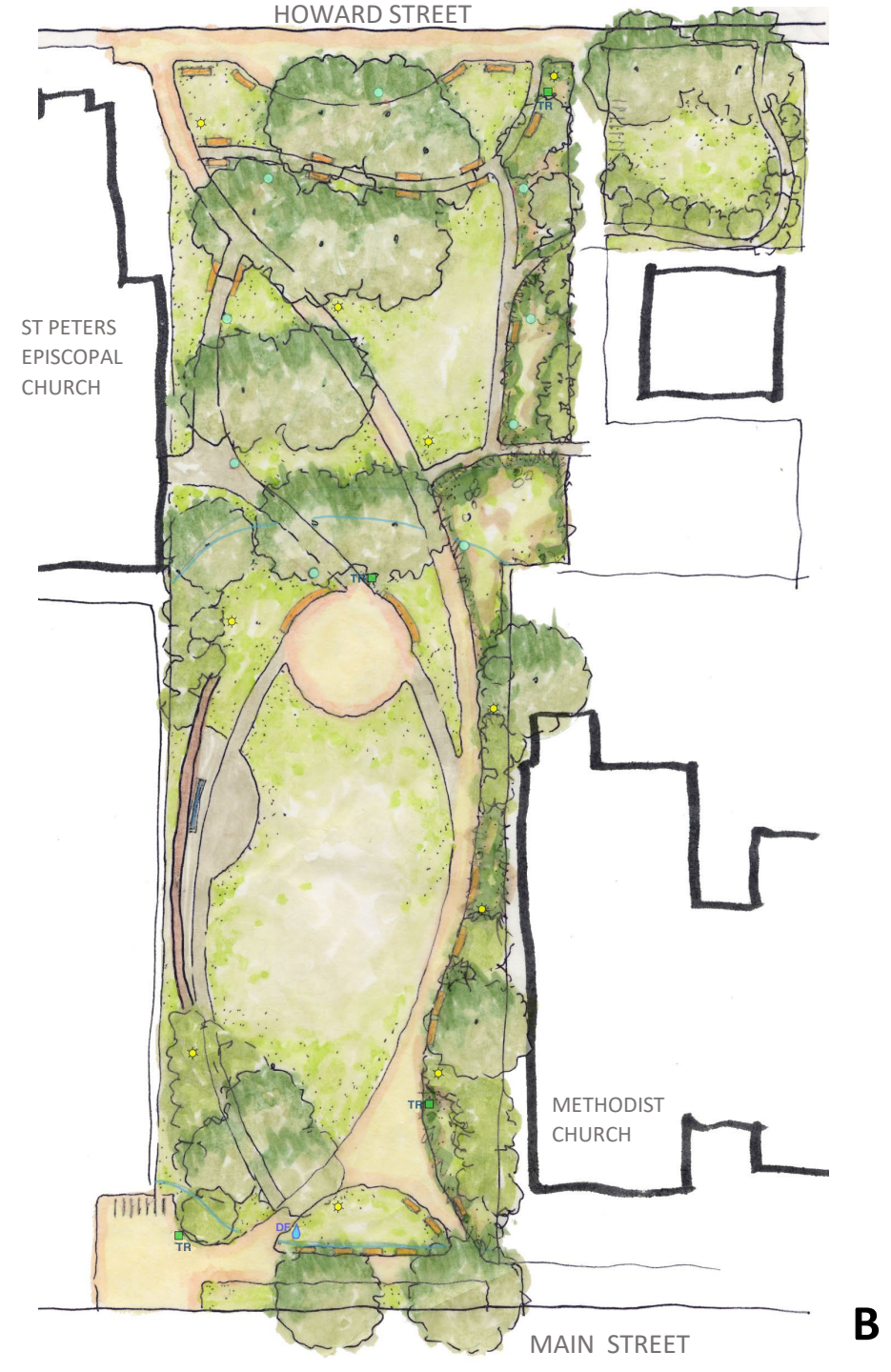
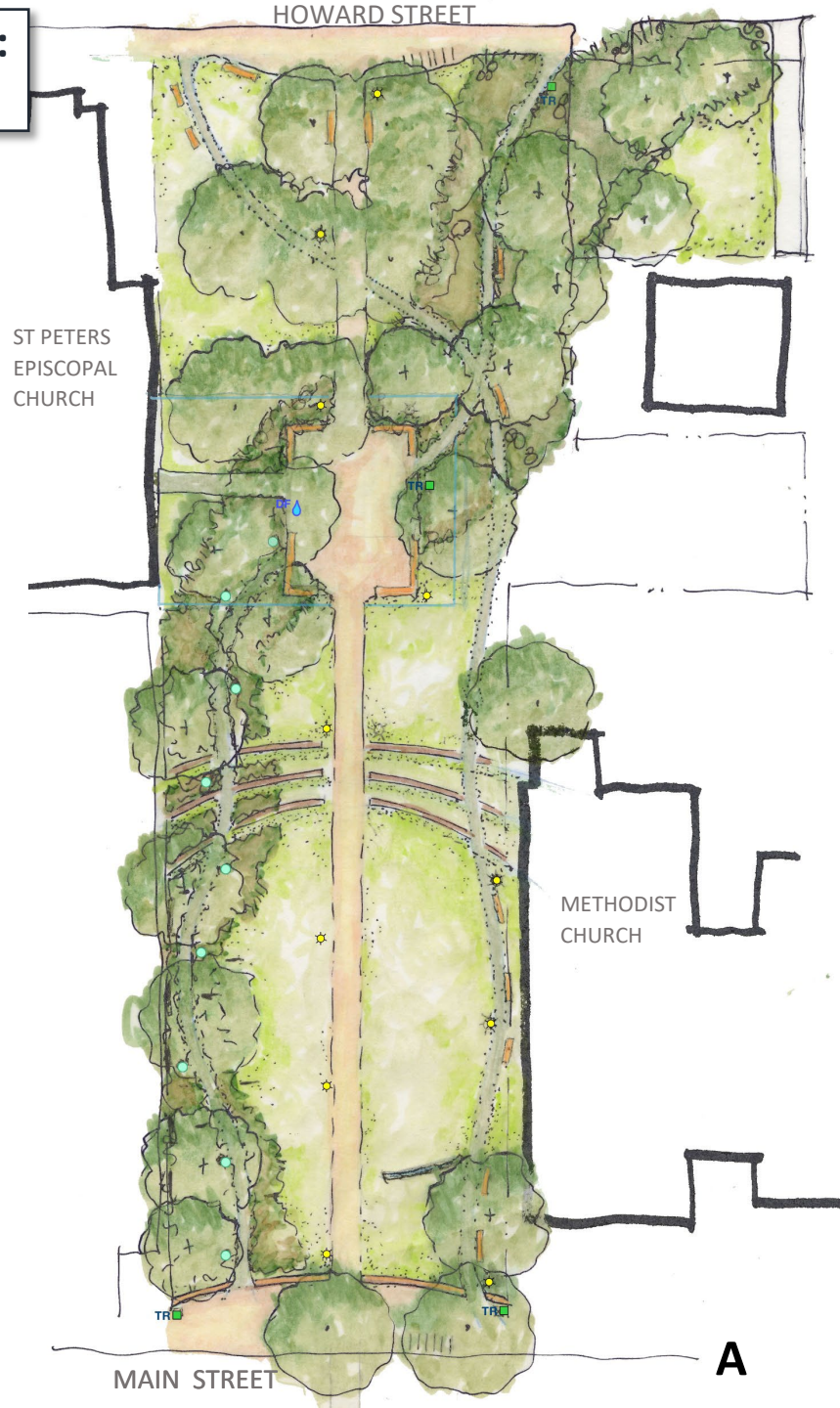


A

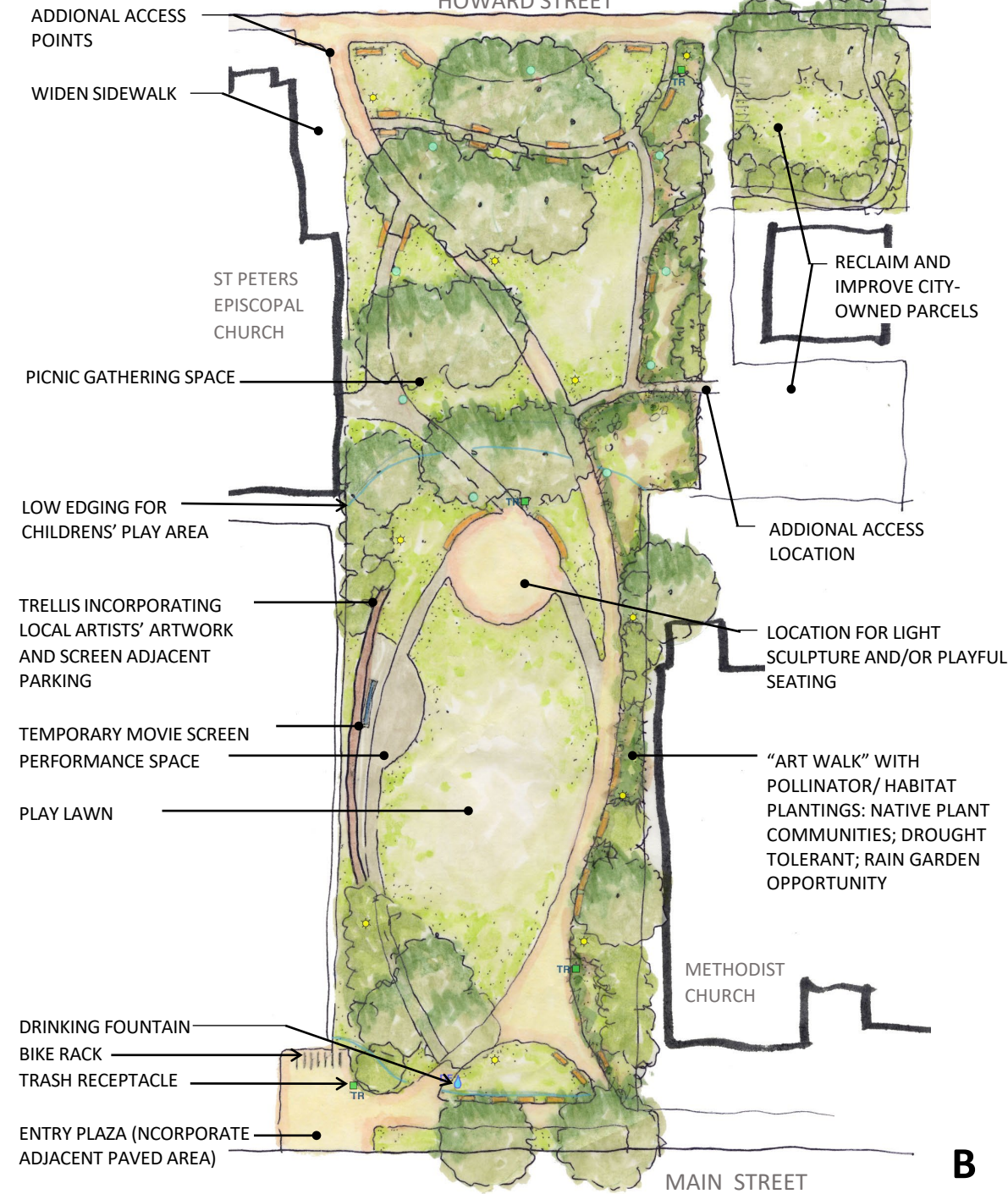
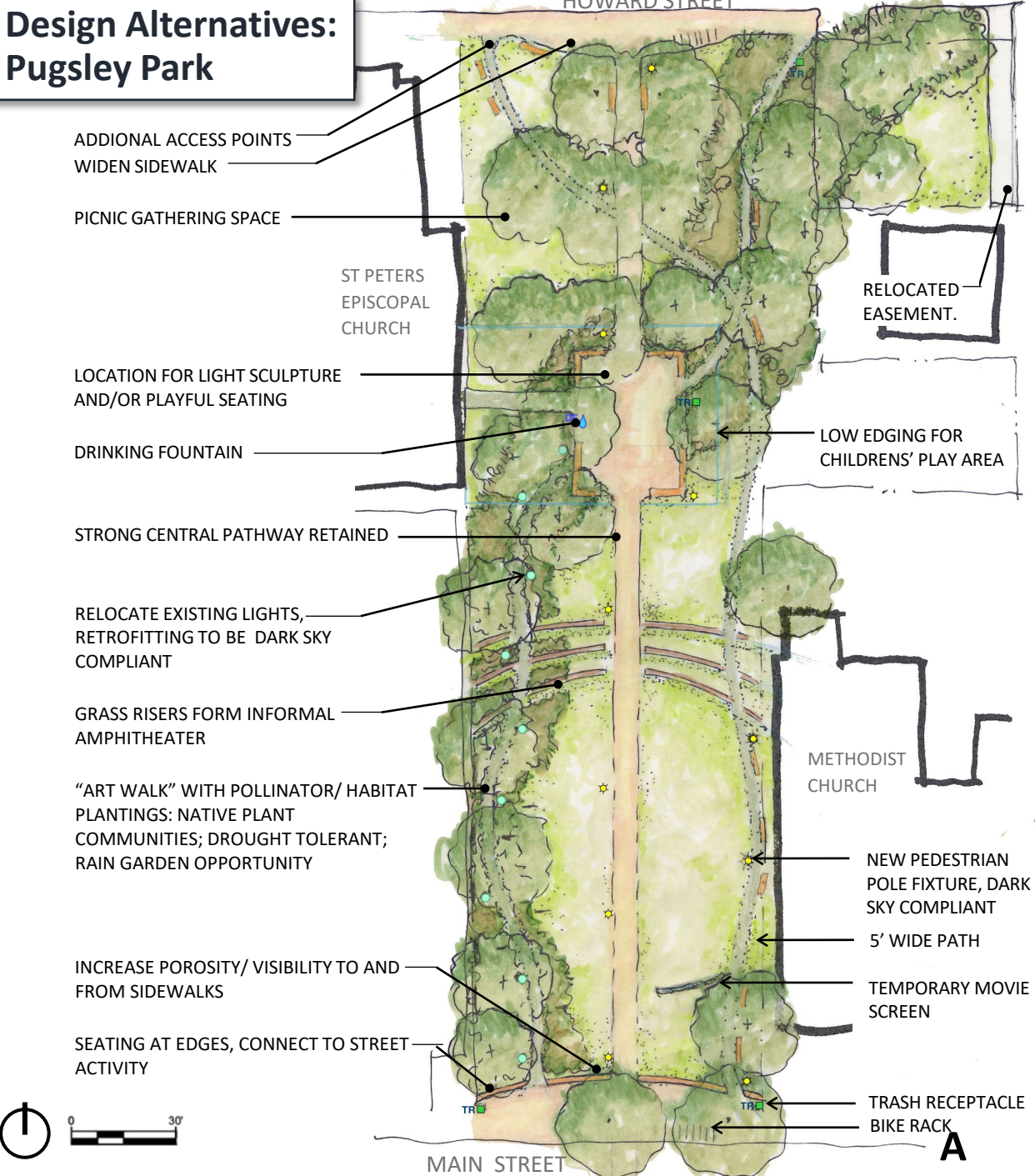


B

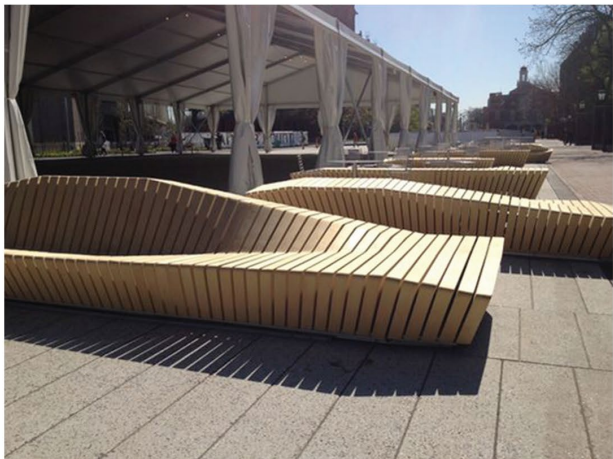
Design Alternatives:
Pugsley Park



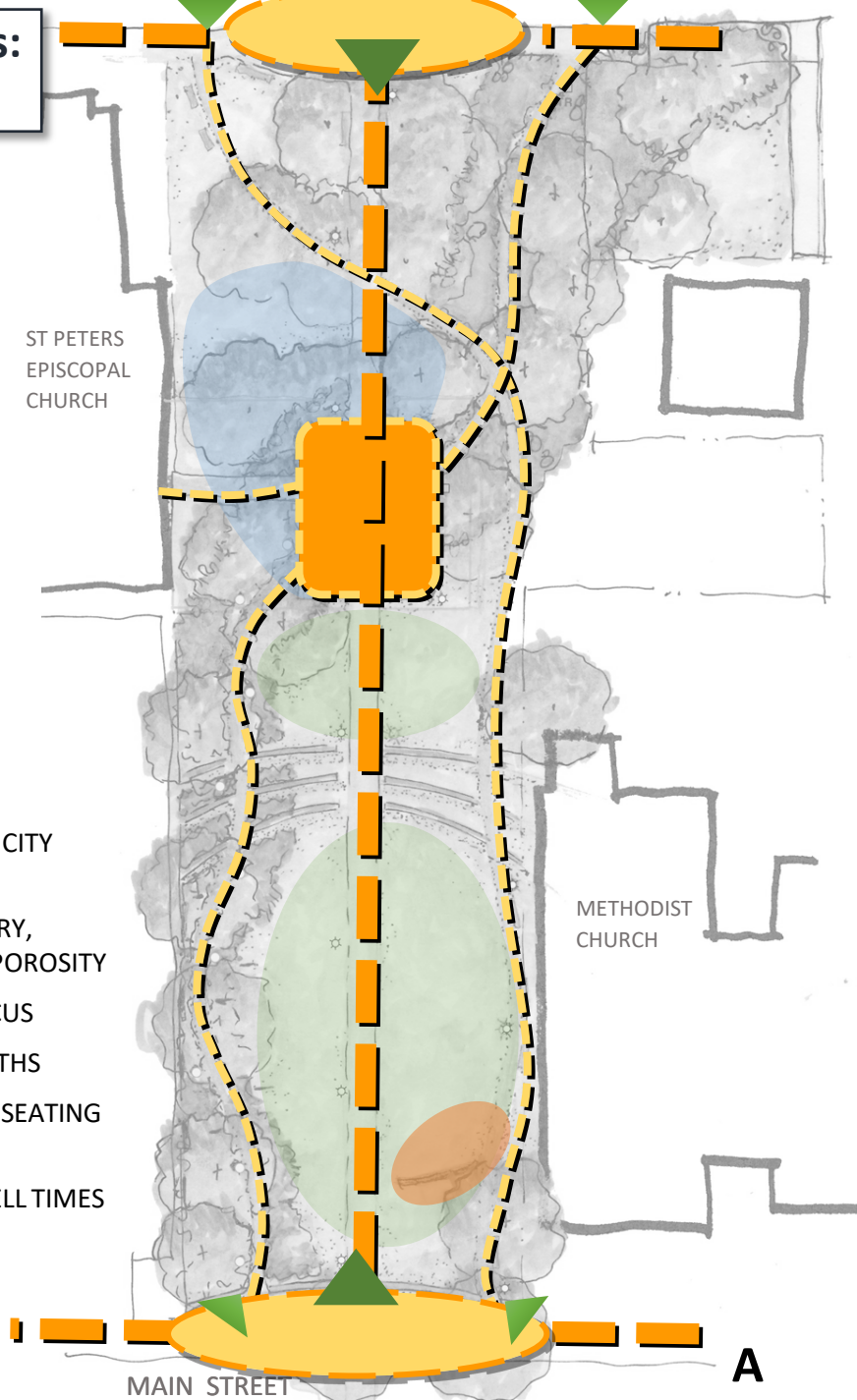
**Design Alternatives:
Pugsley Park**



Seating Ideas & Considerations



**Design Alternatives:
Pugsley Park**



- CONNECT SEAMLESSLY TO CITY PEDESTRIAN NETWORK
- REDUCE BARRIERS TO ENTRY, INCREASE VISIBILITY AND POROSITY
- MAINTAIN A CENTRAL FOCUS
- CREATE HIERARCHY OF PATHS
- VARIED CIRCULATION AND SEATING OPTIONS
- ALLOW FOR INCREASED DWELL TIMES



B

Pavement Ideas & Considerations

